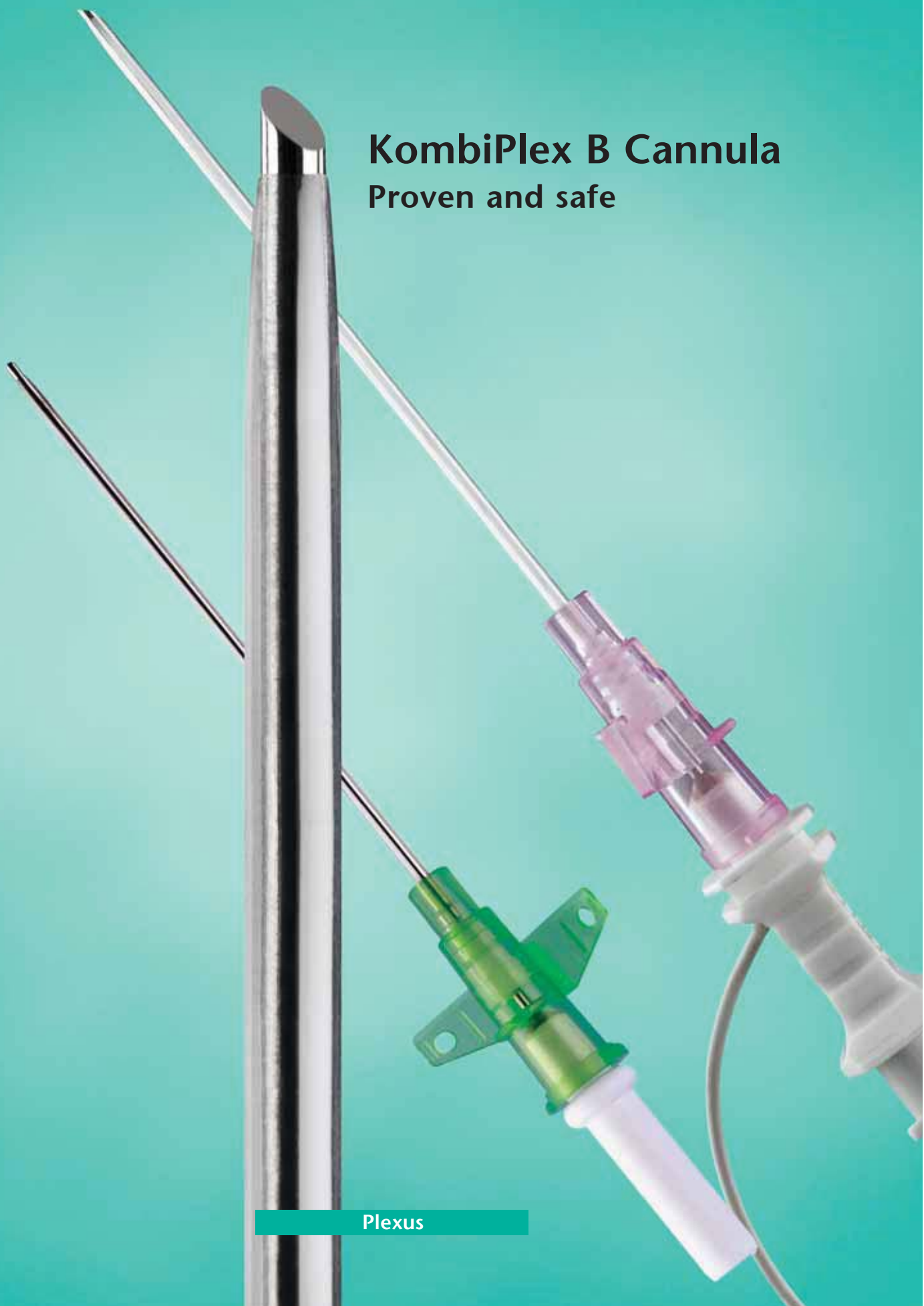


PAJUNK®

KombiPlex B Cannula Proven and safe



Plexus

Simple handling:

The versatile KombiPlex B cannula

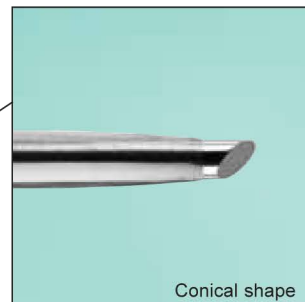
Versatility and safety are the first priorities for the KombiPlex B cannula of PAJUNK. It combines the advantages of "Single Shot Technology" with the technology of continuous catheters. Anaesthesia can be prolonged by the use of the permanent cannula.

The KombiPlex B cannula consists of a solid steel stylet and a permanent cannula made of plastic material that is perfectly fitted to the stylet. Due to the rounded edges at the tip of the steel stylet (45° grind) the cannula can be pushed forward through the subcutaneous tissue very precisely and without the use of pressure; contamination with and spreading of infected skin material into deeper layers is almost ruled out.

The click phenomenon occurring upon the penetration of the vessel nerve sheath provides additional safety. A stimulator can be attached to the connector of the cannula. The positioning of the tip of the needle is verified accurately by dot-like electric stimulation.

Plexus Cannula Set for axillary plexus anaesthesia

KombiPlex B cannula



The steel stylet and the permanent cannula made from Teflon are optimally fitted to each other: The conical shape of the permanent cannula provides for an even and flush transition from the surface of the cannula to the surface of the stylet. A unique grind for stimulation with utmost precision: The tip of the steel stylet is ground to an angle of 45 degrees, and it has rounded edges. This blunt grind causes a distinctly perceivable resistance before the vessel nerve sheath is penetrated. A clear "click" during the process of the puncture indicates, that the cannula was positioned correctly. A notch at the end of the handle of the steel stylet indicates the orientation of the ground surface.

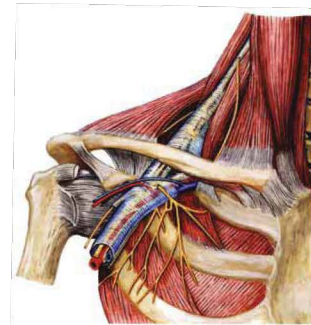
Continuously effective:

Plexus and nerve block anaesthesia with uncoated cannulas

The KombiPlex B cannula is used for short-time and for continuous blockades of the axillary brachial plexus and the lumbar plexus.

Indications for the use of Plexolong catheter technology are in particular:

- Interventions which considerably exceed the periods of effectiveness of conventional local anaesthetics.
- The effective treatment of post-operative pain.
- Permanent blockades for the duration of several weeks in therapy of conditions of severe pain.
- The continuous blockade of the sympathetic nervous system.



Ordering information

KombiPlex B cannulas		
Order no.	Product	U/M
0001151-34	KombiPlex B cannula, 16 G x 3 1/4" (83 mm)	25/Box
0001151-38	KombiPlex B cannula, 18 G x 3" (75 mm)	25/Box
0001151-32	KombiPlex B cannula, 18 G x 2" (51 mm)	25/Box

For more information about this product please don't hesitate to contact us



No. 5, Jalan 9/2, Seksyen 9, 43650 Bandar Baru Bangi, Selangor Darul Ehsan
Tel: +603-8912 3539 Tel: +603-8925 7788 Fax: +603-8925 7797

PAJUNK GmbH Medizintechnologie
Karl-Hall-Strasse 1 D-78187 Geisingen
Germany

Telefon +49 (0) 77 04/92 91-0
Telefax +49 (0) 77 04/92 91-6 00
www.pajunk.com